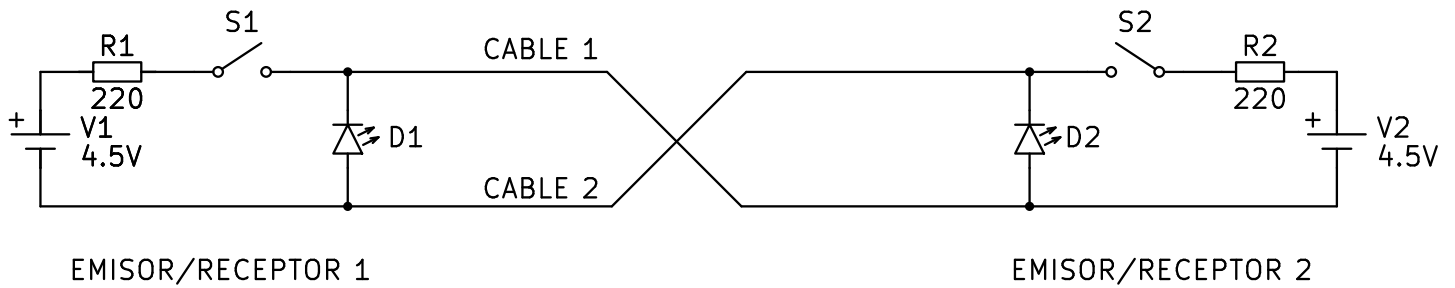
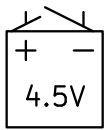


CABLEADO CON BORNAS. TELÉGRAFO ELÉCTRICO DE DOS HILOS.

ESQUEMA ELÉCTRICO



LISTADO DE COMPONENTES



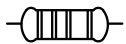
2 x PILA DE PETACA



2 x LED BLANCO DE ALTA LUMINOSIDAD

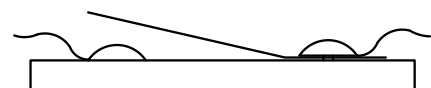
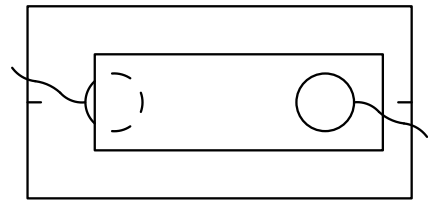


2 x RESISTENCIA DE 220 OHMIOS ROJO, ROJO, MARRÓN, ORO

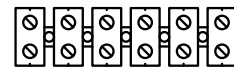


2 METROS DE CABLE FLEXIBLE

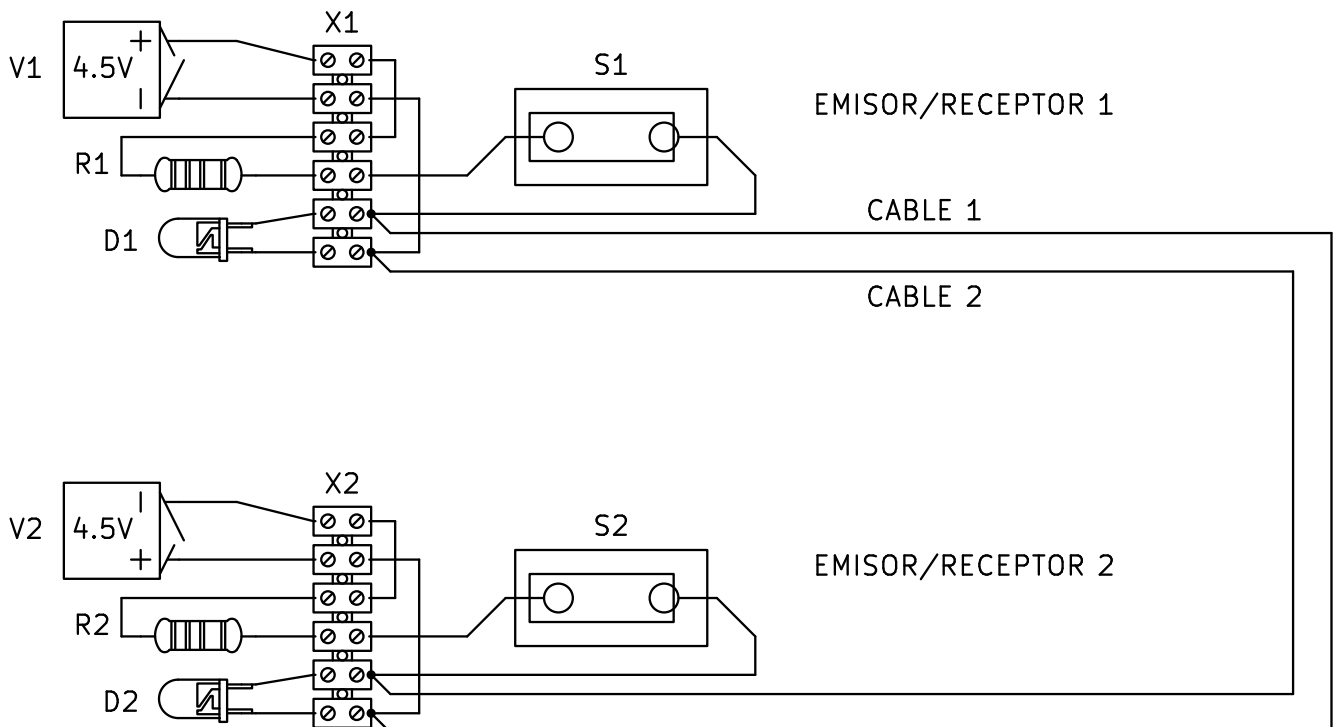
2 x PULSADOR DE TELÉGRAFO



2 x 6 BORNAS DE CONEXIÓN

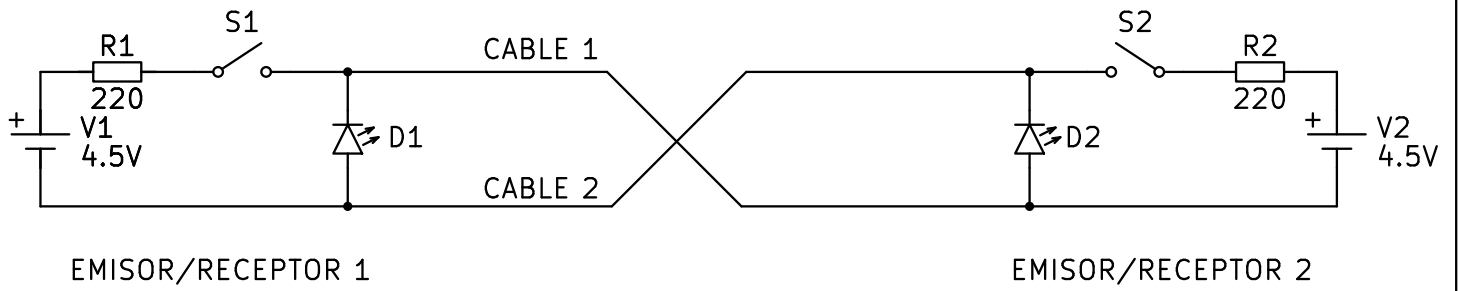


CABLEADO DEL CIRCUITO

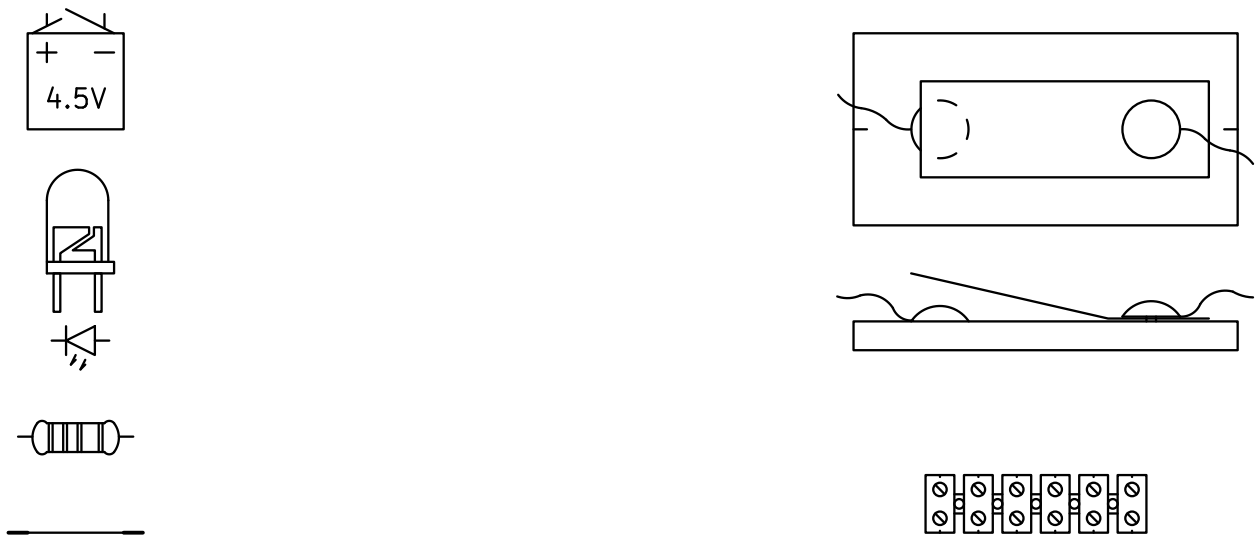


CABLEADO CON BORNAS. TELÉGRAFO ELÉCTRICO DE DOS HILOS.

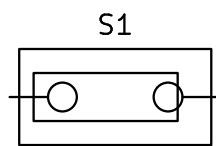
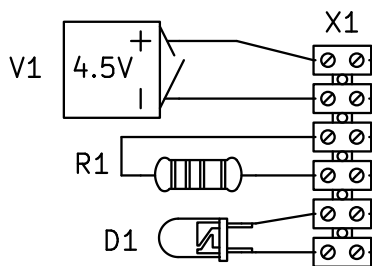
ESQUEMA ELÉCTRICO



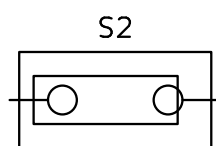
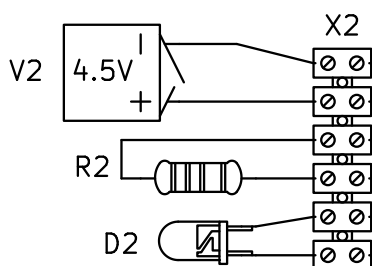
LISTADO DE COMPONENTES



CABLEADO DEL CIRCUITO



EMISOR/RECEPTOR 1



EMISOR/RECEPTOR 2